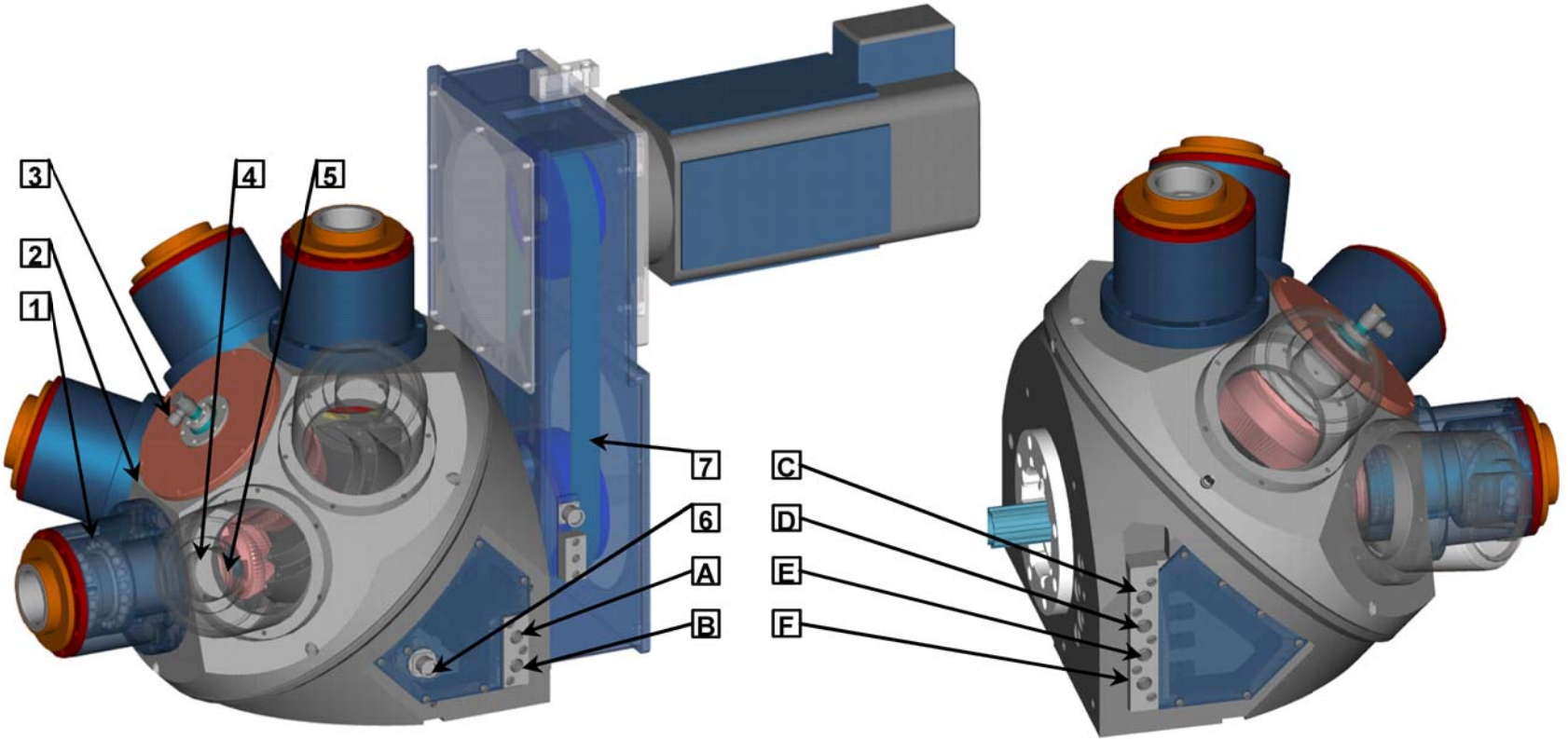
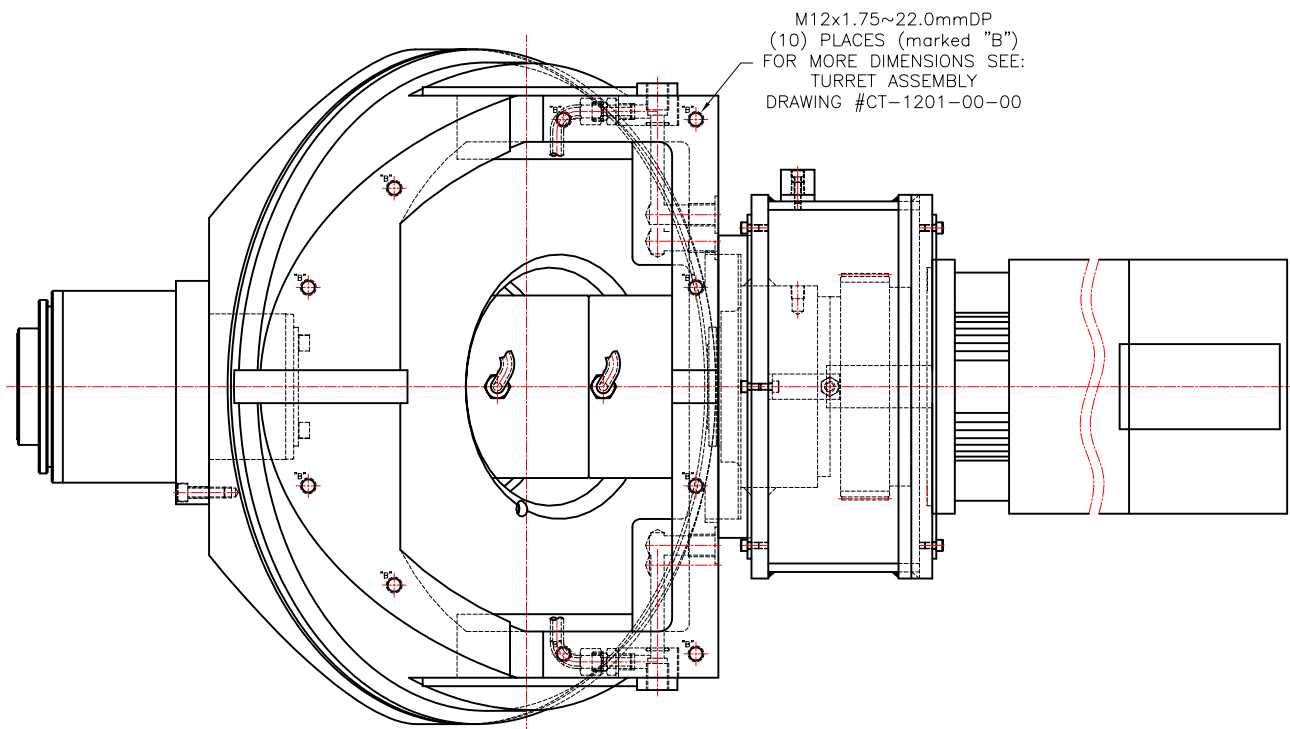
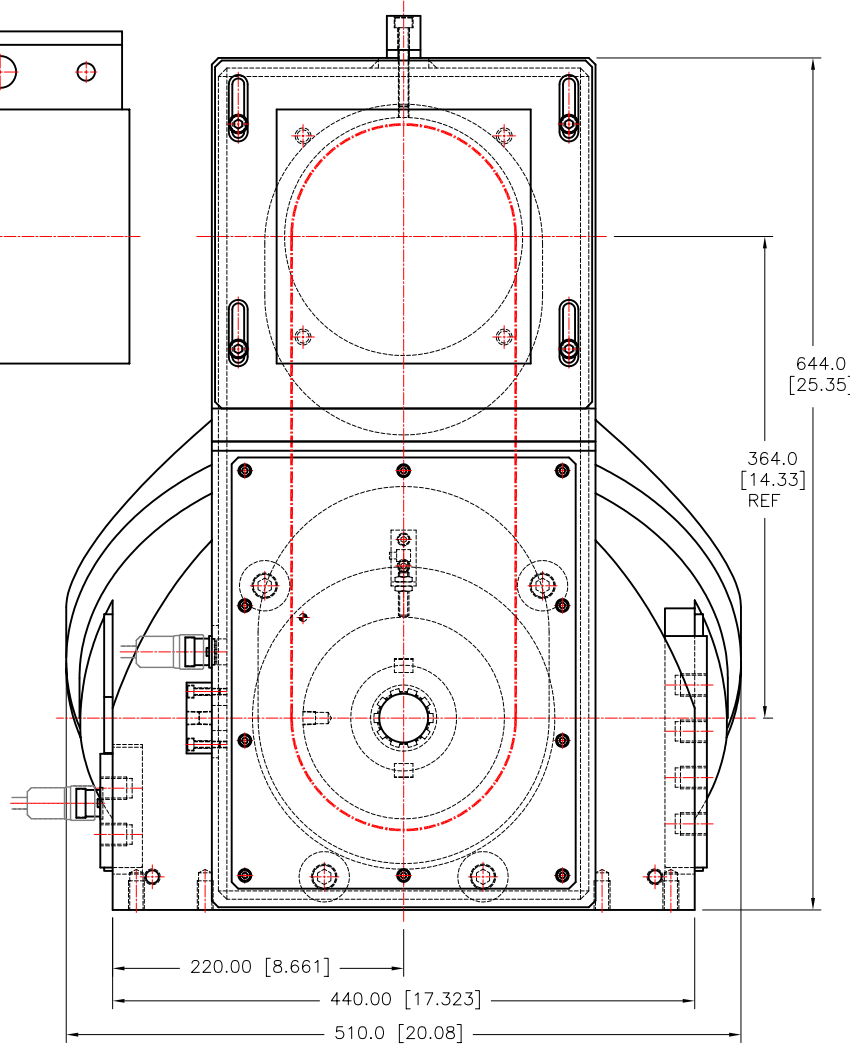
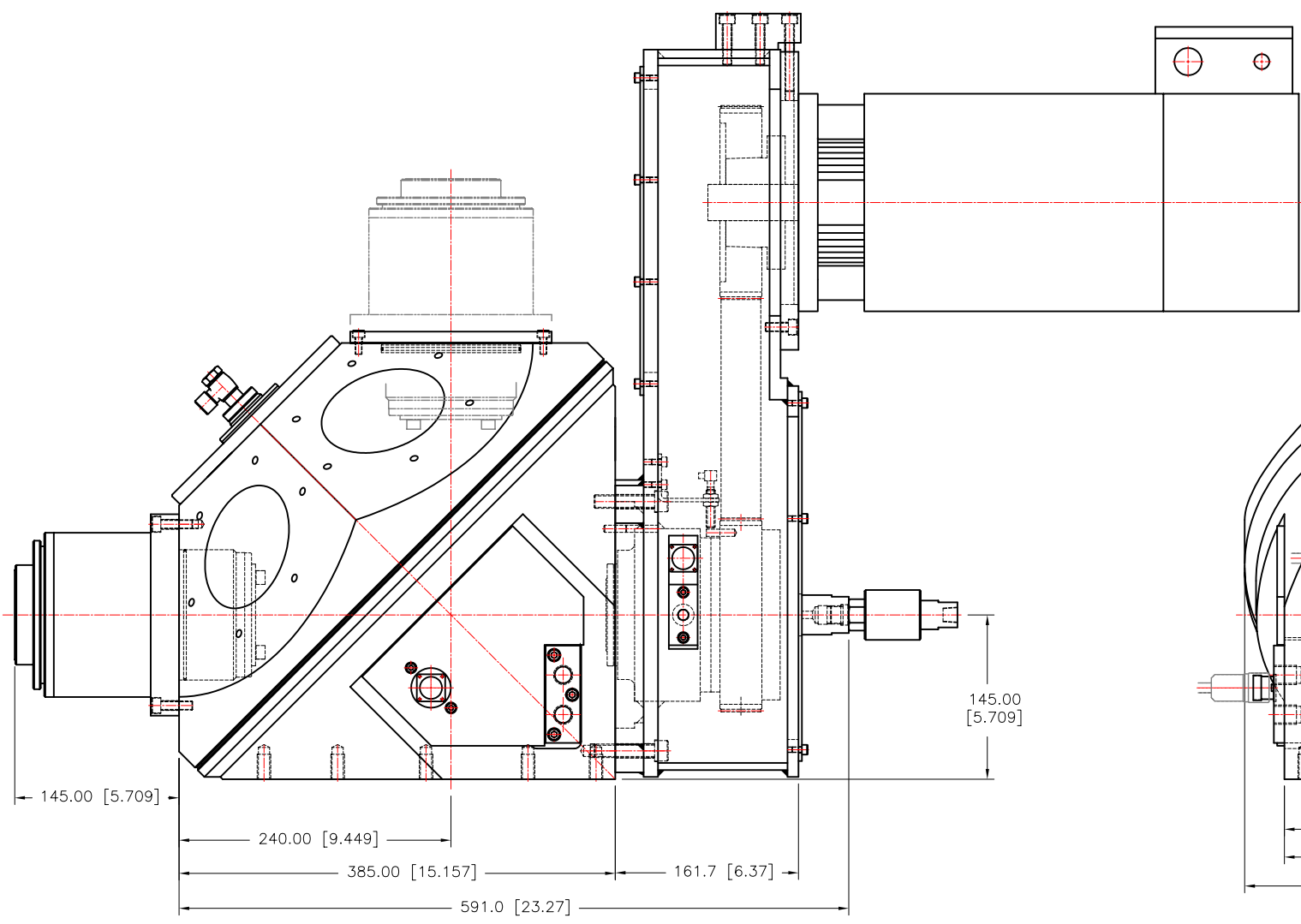


PERFORMANCE CHARACTERISTICS	
Drilling capacity	.....
Tapping capacity	.....
Max. tangential force (N/A for spdl. life)	4000 N
Max. torque (through Turret Assy)	1400 Nm
Max. spindle speed	8000 Rpm
Max. spindle TIR	0.007 mm
Spindle position repeatability	0.007 mm
Servomotor PARVEX HV-840-EM	
Max. drive power (motor & belt)	12.3 kW
Max. motor speed (motor & belt)	8000 Rpm
Base motor speed	3940 Rpm
Index time (1/6 of rotation) (depends on spindle speed and tool mass)	1.5 sec.
Max. hydraulic pressure	400 PSI
Max. coolant through pressure	1000 PSI
Paint: .....	.....
Weight: w/ 6 spindles, motor & drive	470 kg

FEATURES	
1	1 to 6 spindles HSK-63 with angular contact bearings. <b>Optional:</b> other types of spindles adaptation for multispindle heads and angle heads.
2	Turret rotation on tapered rollers bearings, preloaded. Precision locking using HIRTH coupling, spring locked and hydraulically unlocked
3	External coolant port. M12x1.5 female thd., for tube or hose.
4	Curvic coupling between drive and spindles. <b>Optional</b> Index Mechanism for extended coupling life.
5	<b>Optional</b> Coolant Coupling for coolant through the spindle center
6	15 pins connector for prox. switches. (PNP, 10-30VDC, 1.5kHz) 1 switch for turret zero position. 2 switches for Drive-to-Spindle & Drive-to-Turret positions 2 switches for HIRTH coupling Locked & UnLocked positions
7	Transmission: GoodYear Eagle 35 mm belt. Standard ratio 1:1



Preliminary release SPINDLE CATALOG / Release Version V1.04

**RAS400-001-00-00**